

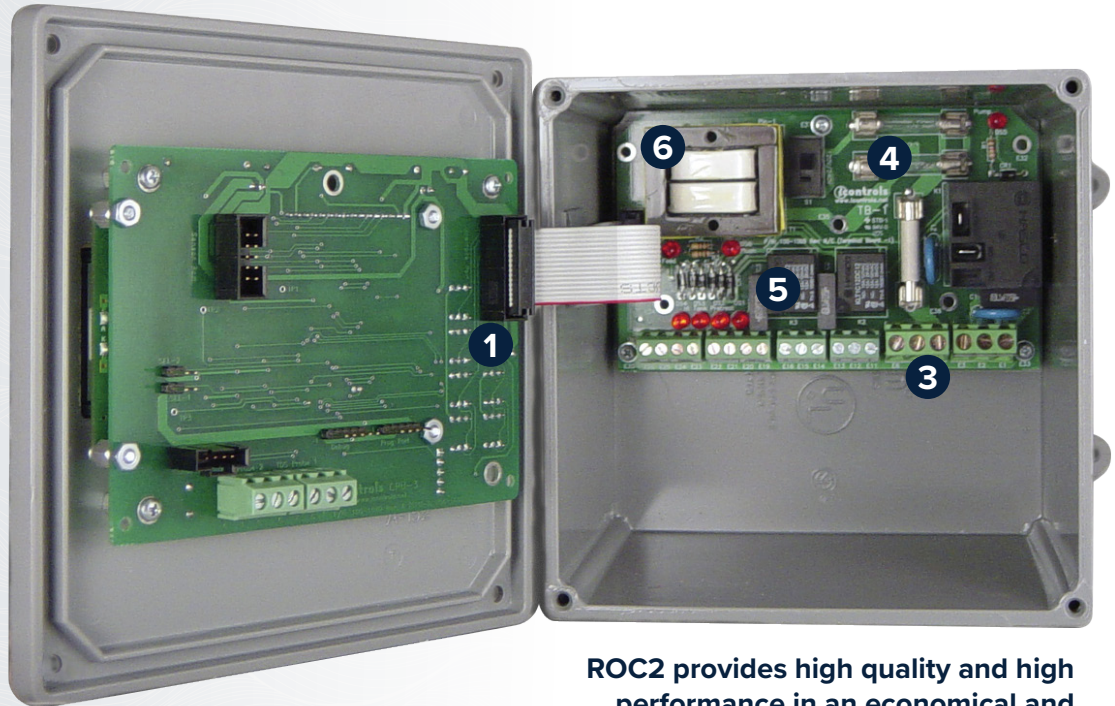
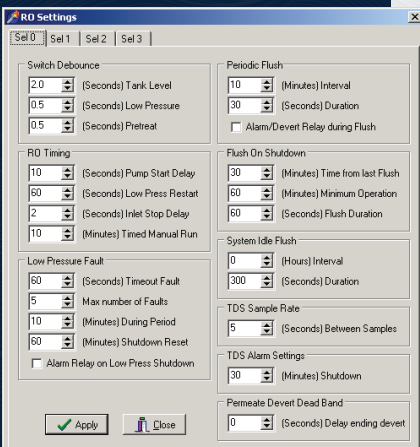
# ROC

Reverse Osmosis Controller

**Big System Features for Nelsen Commercial NRO Systems in a Small Package.** The low cost optional controller for the Nelsen Commercial NRO Systems offers advanced features at uncompromised quality.

**Custom Graphics** - Use your logo or brand name to upgrade the appearance of your systems and strengthen your brand. Or, add value for your customers by providing custom branding.

**More Control** - flexible and powerful software gives you complete control over your RO system™'s performance. Choose from 4 complete program profiles. Use the factory presets or they can be customized to your specs.



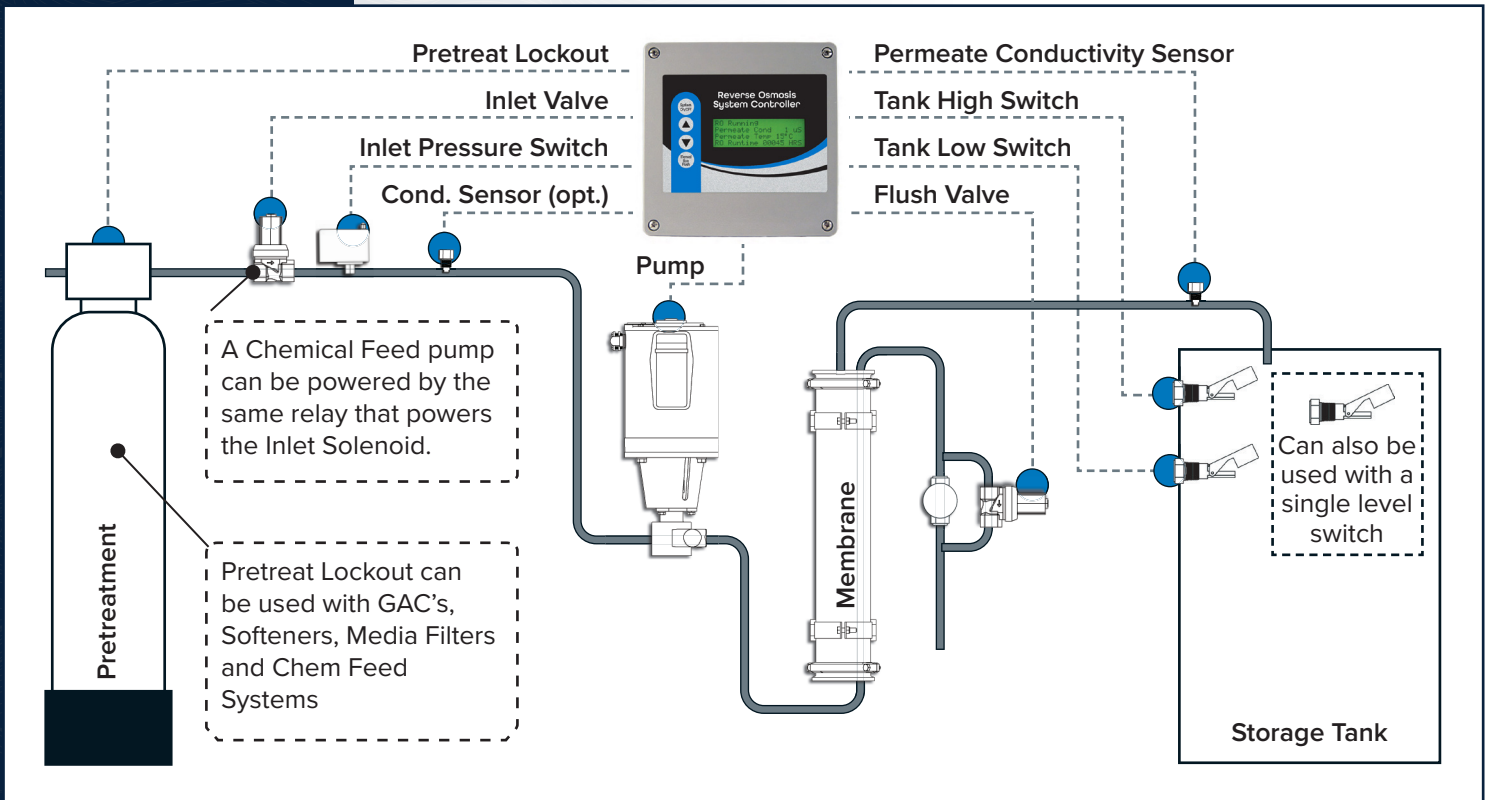
ROC2 provides high quality and high performance in an economical and compact, (6.5" x 6.5") package.

## Advanced Features, Uncompromised Quality

- 1 Superior Hardware Design:** Modular for easier assembly, easier service and superior flexibility. Clean logical layout with clear labeling and easy access.
- 2 Superior Interface:** 4 line LCD with clear, common-sense information. Takes the guess-work out of monitoring the RO.
- 3 Superior Electrical Design:** High-current wiring is stationary – not subject to flexing and twisting every time the controller door is opened. The terminal block is mounted to the back panel where it belongs. Wiring is easier, cleaner and more secure.
- 4 Superior Protection:** Fully fused – because fuses cost less than circuit boards. Uses standard, readily-available fuses.
- 5 Superior Filtering:** Robust protection from surges, interference or miswiring.
- 6 Superior Power Supply:** Operates reliably on varying voltages.



## Pictorial Schematic of a Typical ROC-2 System



### OUTPUTS

<b>Feed Solenoid</b>	6A (Inductive). Voltage is the same as motor voltage—easily changed by user.
<b>Flush Solenoid</b>	6A (Inductive). Voltage is the same as motor voltage—easily changed by user.
<b>Motor</b>	20A, 1.0HP/120V, 2.0HP/240V.

### OTHER

<b>Dimensions</b>	6.5" tall, 6.5" wide, 4.5" deep. Nema 6P non-metallic.
<b>Weight</b>	2.3 lb. (Basic Configuration, not including optional wire harness, etc..)
<b>Environment</b>	0-50°C, 10-90%RH (noncondensing)

### INPUTS

<b>Tank Level</b>	(2) Normally-Closed.
<b>Switches</b>	Can be used with a single level switch
<b>Inlet Pressure Switch</b>	Normally-Open
<b>Pretreat Lockout Switch</b>	Normally-Open
<b>Controller Power</b>	120/240 VAC, 60/50Hz
<b>Permeate Conductivity</b>	0-1500* PPM, 0-3000 µs
<b>Feed Conductivity</b>	(opt) 0-3000* PPM, 0-6000 µs

\*With cell constant of 0.75. Higher ranges require a different cell constant.